



TGSS

TERMA GROUND SEGMENT SUITE

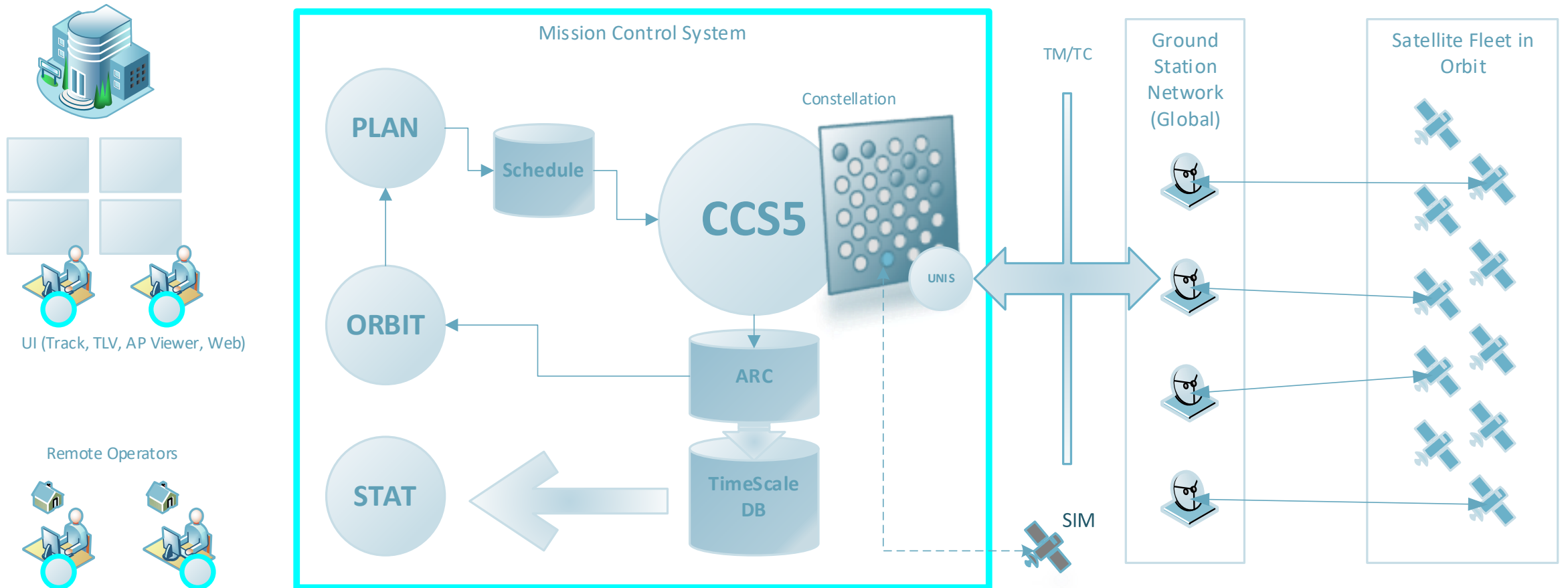
TGSS: Terma Ground Segment Suite

TGSS suite of products

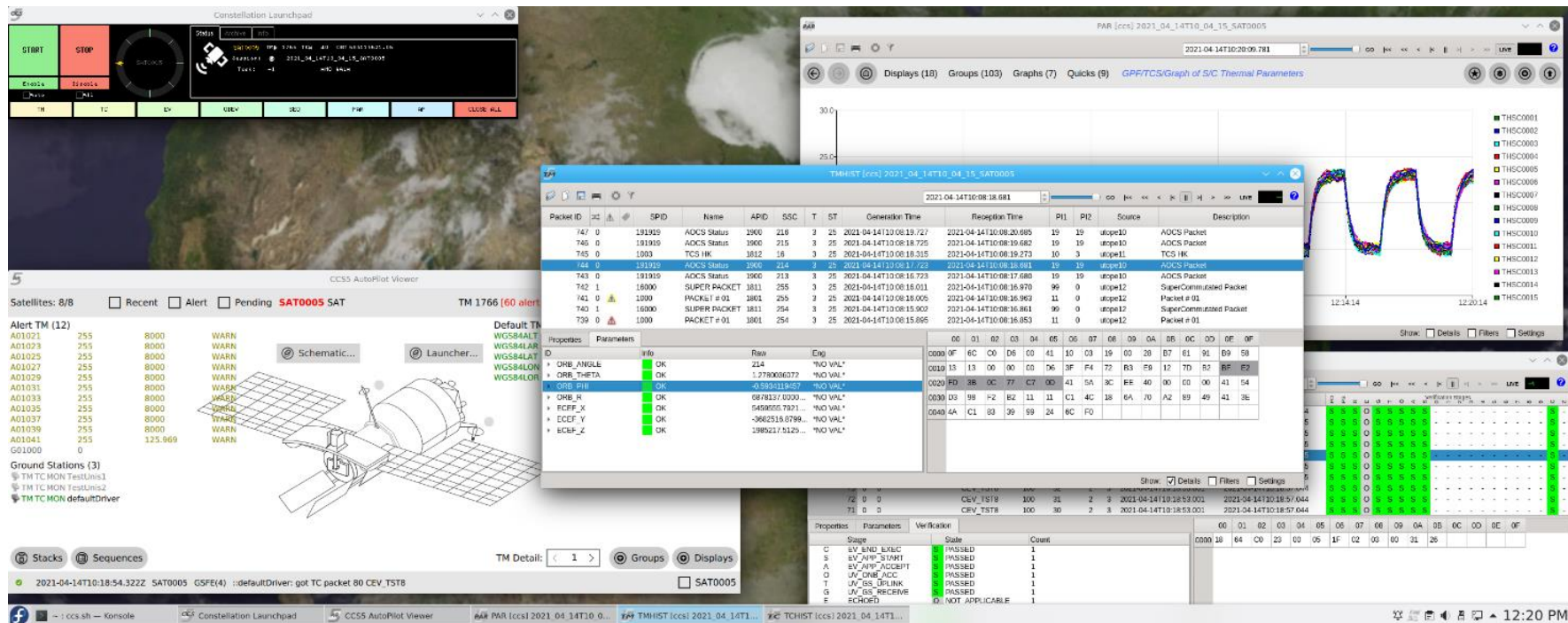
Covers full range of satellite testing, operation & simulation applications

See support site: <https://tgss.terma.com>

TGSS Overview

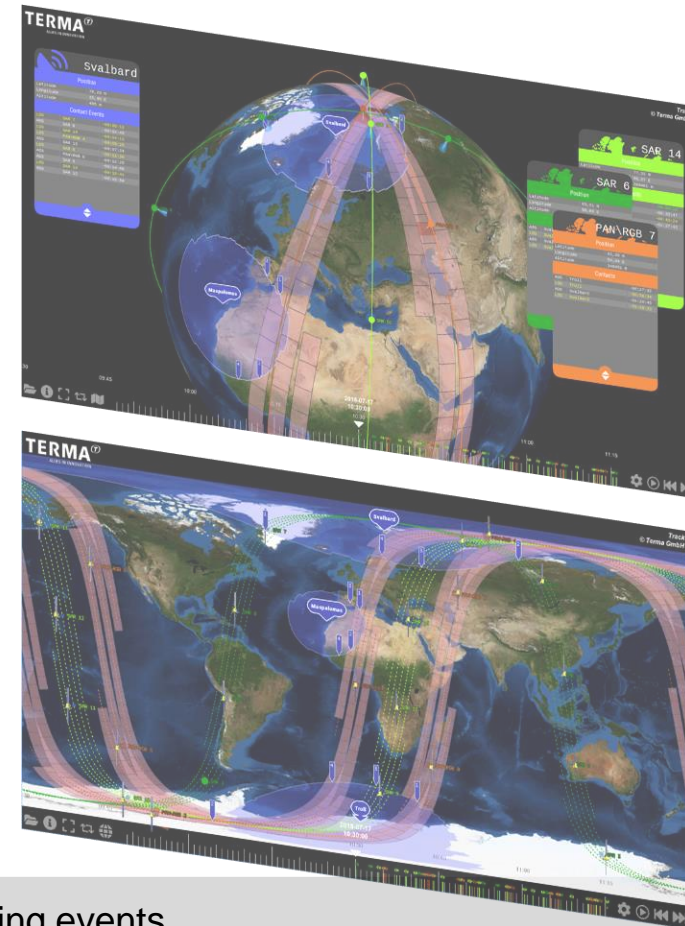
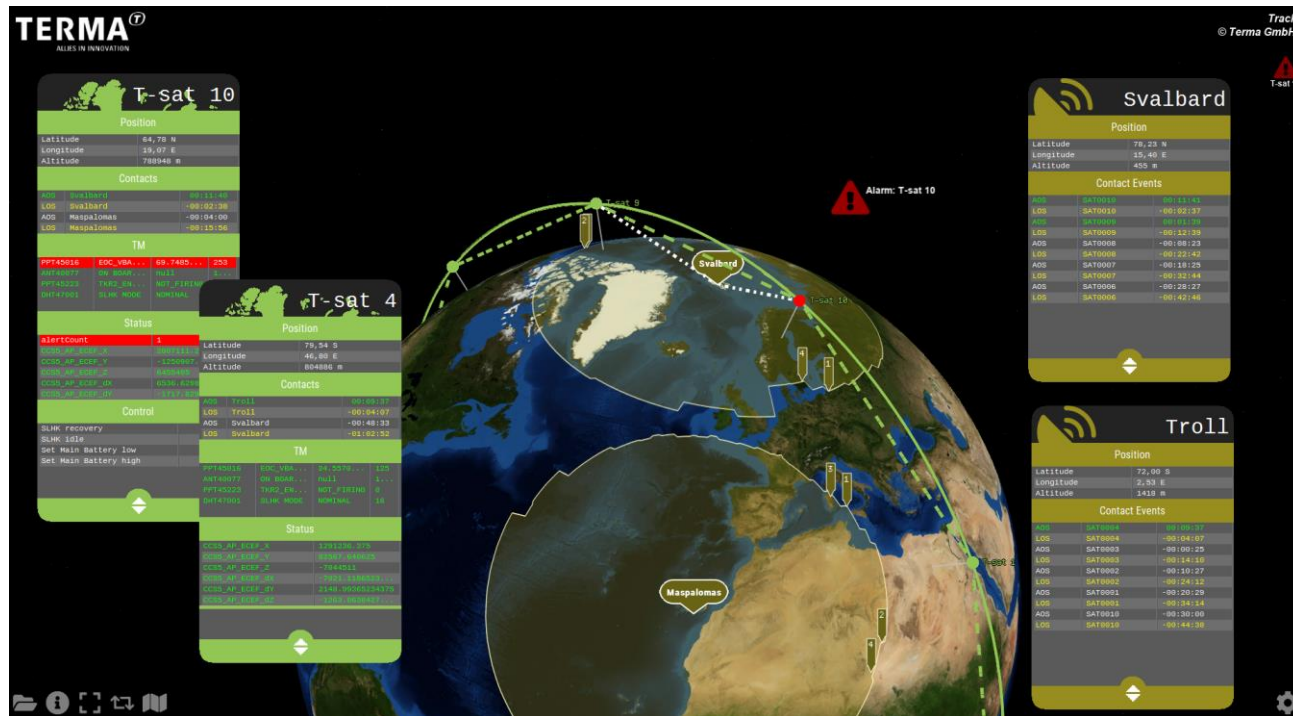


CCS5: Satellite Monitoring & Control



Fully-featured M&C system, uses enhanced ESA SCOS2000 data model (MIB), fully refactored Enhancements give greater flexibility (fully standard-compliant or, non-ECSS, non-PUS, non-CCSDS) Performance suited for modern spacecraft & fleets Portable (Windows & Linux), & easy to install Built-in authentication & encryption support

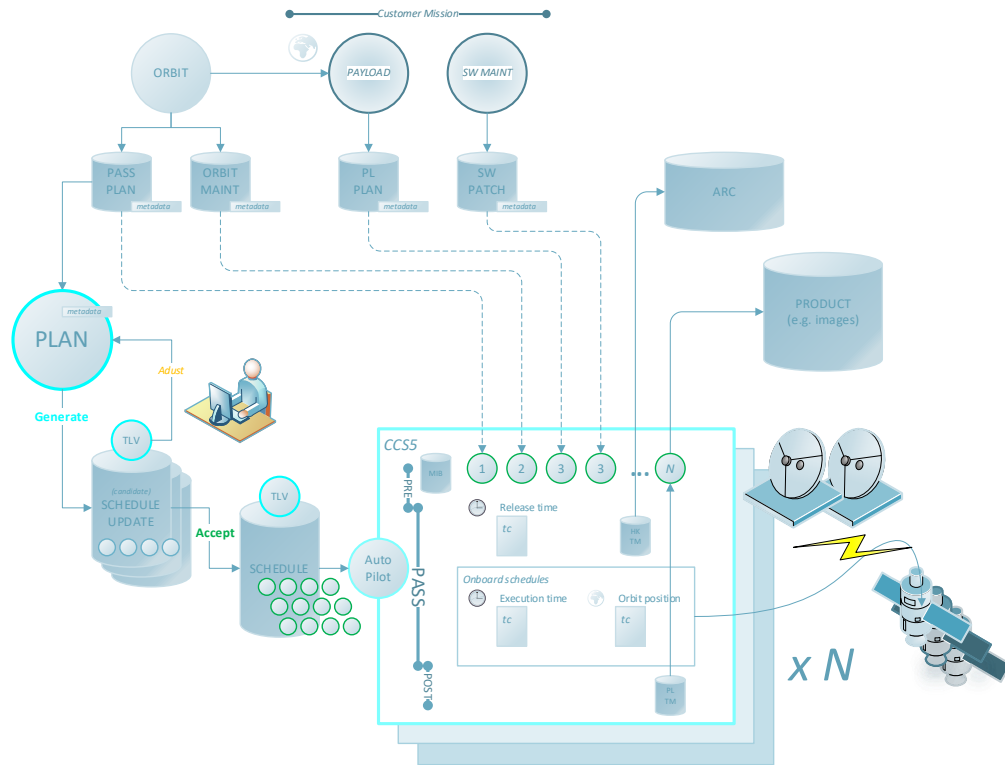
TRACK: Orbit Visualisation



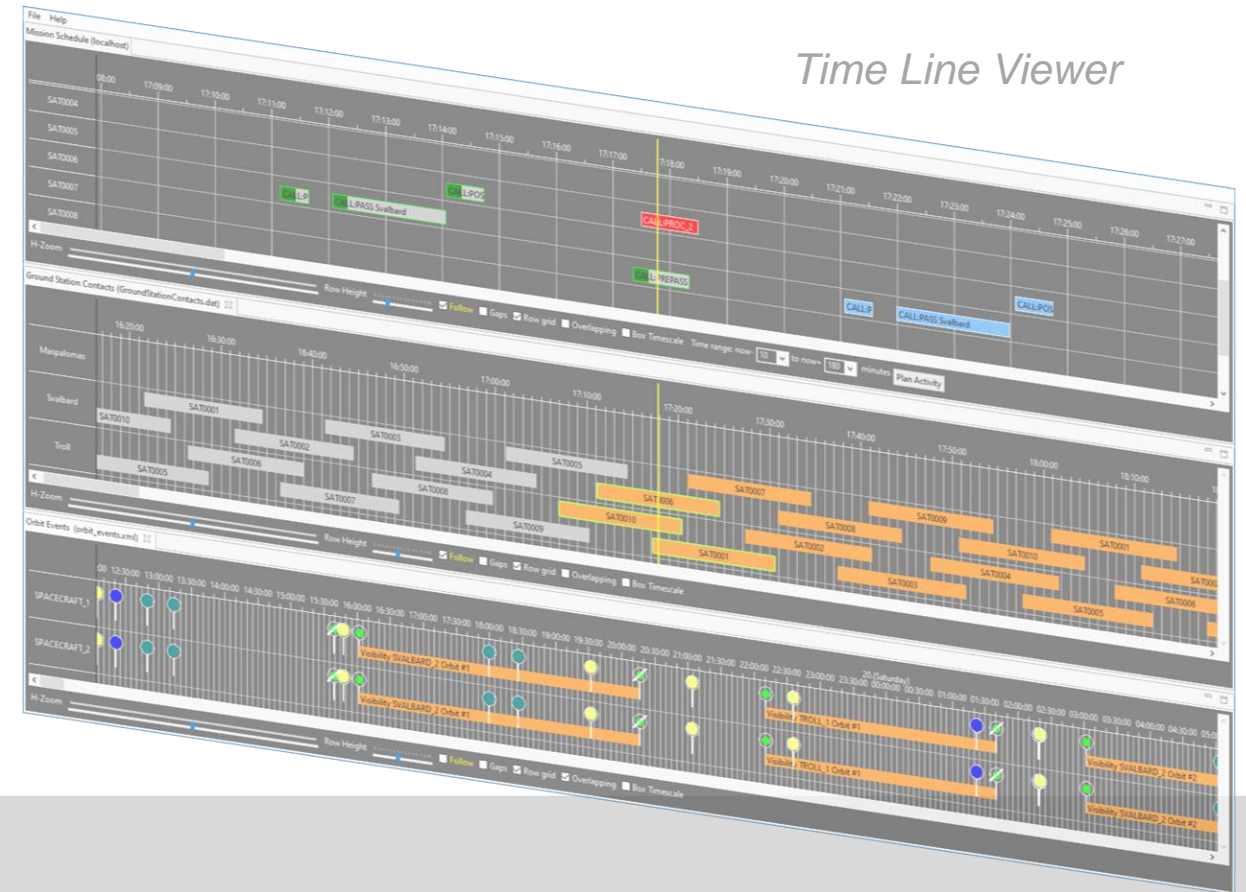
Presentation of orbit in 3D with call-outs for satellite & data links status, forthcoming events

- Accepts live TM updates from CCS/TSC as well as replay from files
- Orbit event (AOS/LOS at ground station, eclipses) & swath visualisation
- View single satellite or complete fleet, in various projection

PLAN: Mission Planning & Scheduling

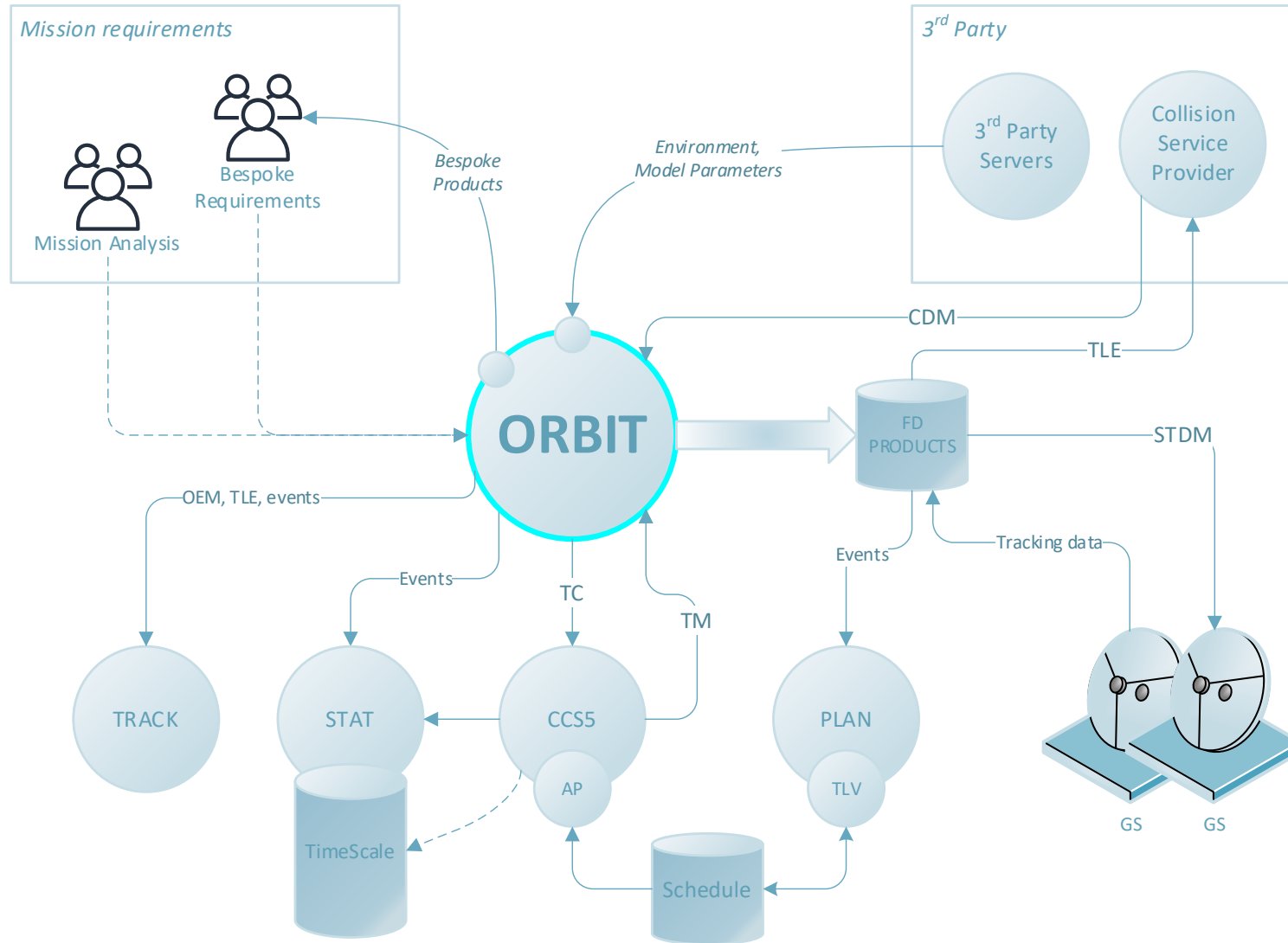


Time Line Viewer

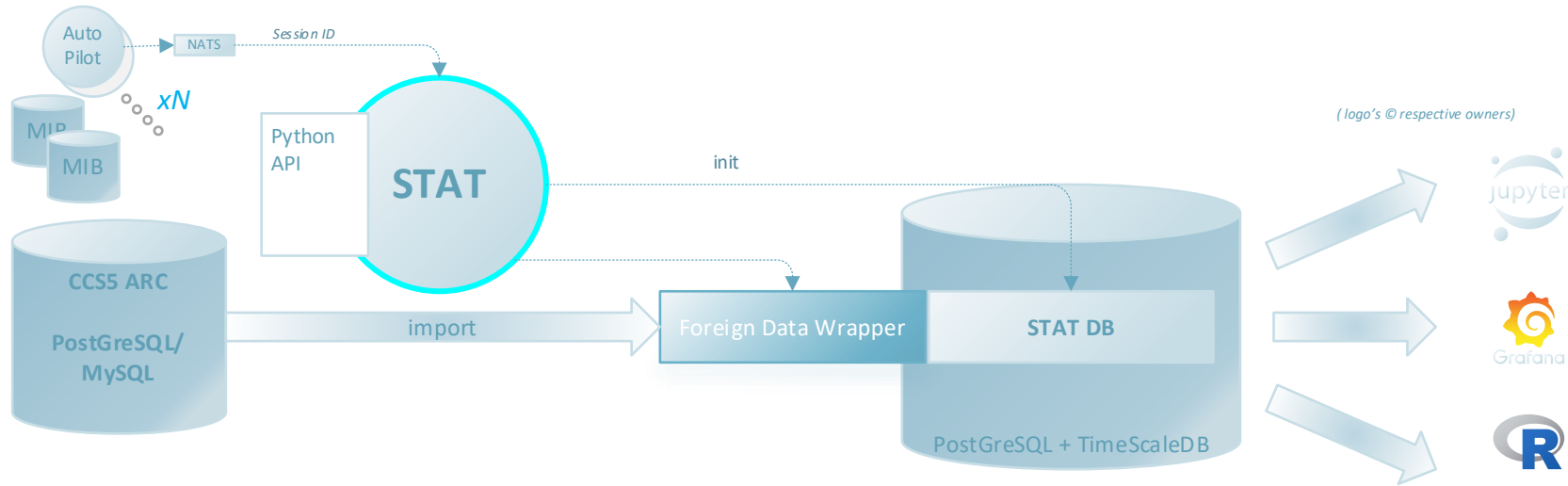


- Generic automated search for acceptable schedules
- Arbitrary resource definition
- Visualisation of schedules in dedicated timeline viewer

ORBIT: Flight Dynamics System



STAT: Long-term Archiving & Visualisation



- Optimised automated transfer of CCS5 TM parameters & events
- Long term (compressed) archive for efficient retrieval
- Variety of retrieval tools for analysis & visualisation
- Interfaces to other TGSS products



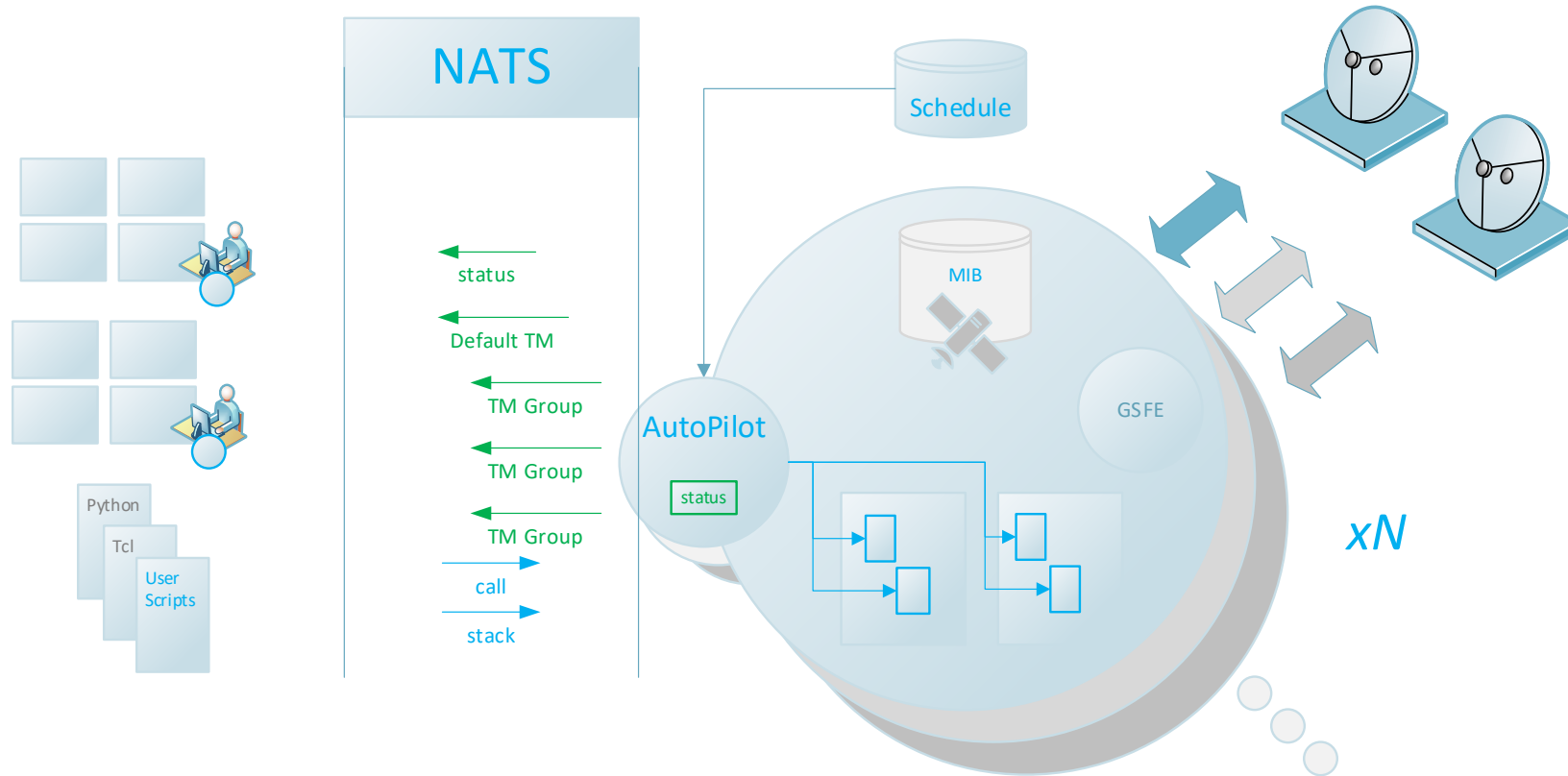
Constellation & Fleet Support



Issues considered:

- Support for multiple spacecraft in one host
- Fleet may be homogeneous (identical, similar), or all different
- UI design for managing large fleets
- Avoid complex IT setup, preserve easy installation & configuration

CCS5: AutoPilot



AutoPilot supports simplified remote monitoring & control, automation & scheduling

- Single-satellite and constellation compatible, checkout or operations
- Simplified API via publish/subscribe messages (NATS) containing JSON or CBOR, accessible e.g. from Python
- AutoPilot schedules planned activities and executes them, reporting the result



FIND OUT MORE...

[TGSS.TERMA.COM](https://tgss.terma.com)

ABOUT TERMA:

[WWW.TERMA.COM](https://www.terma.com)

[WWW.LINKEDIN.COM/COMPANY/TERMA-A-S](https://www.linkedin.com/company/terma-a-s)

[WWW.YOUTUBE.COM/USER/TERMATV](https://www.youtube.com/user/termatv)